

BRH 1,070 v. OKRF
Dreiecksfenster

2.86

DB 20/20

H = 0.25 m

H = 1.00 m

H = 1.50 m

H = 2.00 m

H = 2.30 m

FD 20/20

H = 1.50 m

H = 2.00 m

H = 2.30 m

H = 0.25 m

H = 1.00 m

H = 1.50 m

H = 2.00 m

H = 2.30 m

H = 0.25 m

H = 1.00 m

H = 1.50 m

H = 2.00 m

H = 2.30 m

H = 0.25 m

H = 1.00 m

H = 1.50 m

H = 2.00 m

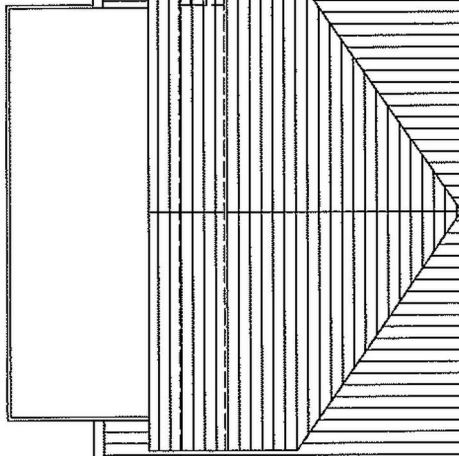
H = 2.30 m

H = 0.25 m

H = 1.00 m

H = 1.50 m

H = 2.00 m



Flur
4.84 m²
11.883 m

Mindestabstand 1.50 m

1.94

2.02

1.92

2.00

1.92

2.00

1.92

2.00

1.92

2.00

1.92

2.00

1.92

2.00

1.92

2.00

1.92

2.00

First
Abstr. 1
21.58 m²
18.707 m

Abstr. 2
7.46 m²
11.163 m

Abstr. 2
4.22 m²
8.237 m

Abstr. 1
31.09 m²
25.703 m

Tür
abschrägen

Velux
78x140

Velux
78x140

Velux
78x140

Velux
78x140

2.86

DB 20/20

H = 0.25 m

H = 1.00 m

H = 1.50 m

H = 2.00 m

H = 2.30 m

FD 20/20

H = 1.50 m

H = 2.00 m

H = 2.30 m

H = 0.25 m

H = 1.00 m

H = 1.50 m

H = 2.00 m

H = 2.30 m

H = 0.25 m

H = 1.00 m

H = 1.50 m

H = 2.00 m

H = 2.30 m

H = 0.25 m

H = 1.00 m

H = 1.50 m

H = 2.00 m

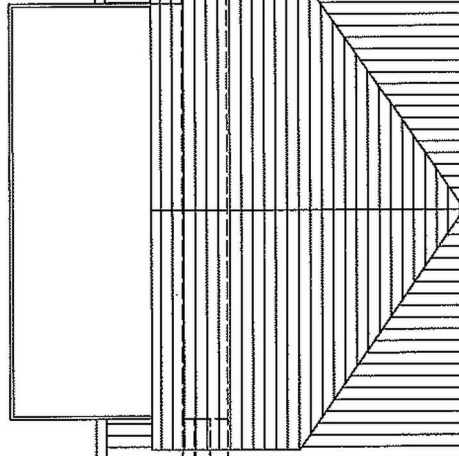
H = 2.30 m

H = 0.25 m

H = 1.00 m

H = 1.50 m

H = 2.00 m



Flur
4.84 m²
11.883 m

Mindestabstand 1.50 m

1.94

2.02

1.92

2.00

1.92

2.00

1.92

2.00

1.92

2.00

1.92

2.00

1.92

2.00

1.92

2.00

1.92

2.00

Abstr. 1
31.09 m²
25.703 m

Tür
abschrägen

Velux
78x140

Velux
78x140

Velux
78x140

Velux
78x140

2.86

DB 20/20

H = 0.25 m

H = 1.00 m

H = 1.50 m

H = 2.00 m

H = 2.30 m

FD 20/20

H = 1.50 m

H = 2.00 m

H = 2.30 m

H = 0.25 m

H = 1.00 m

H = 1.50 m

H = 2.00 m

H = 2.30 m

H = 0.25 m

H = 1.00 m

H = 1.50 m

H = 2.00 m

H = 2.30 m

H = 0.25 m

H = 1.00 m

H = 1.50 m

H = 2.00 m

H = 2.30 m

H = 0.25 m

H = 1.00 m

H = 1.50 m

H = 2.00 m